



WI #16-085

**Report No. NM1-1**  
**Glenview Elementary – Noise Monitoring**

<b>To</b>	Wil Newby, OUSD
<b>Prepared By</b>	Deborah Jue
<b>Date of Report</b>	October 5, 2016
<b>Location of Monitoring</b>	NM1 – 1532 Hampel backyard
<b>Monitoring Period Covered By Report</b>	Tuesday, September 20 to Sunday, September 25, 2016
<b>Equipment</b>	Larson Davis 812, Serial No. 785

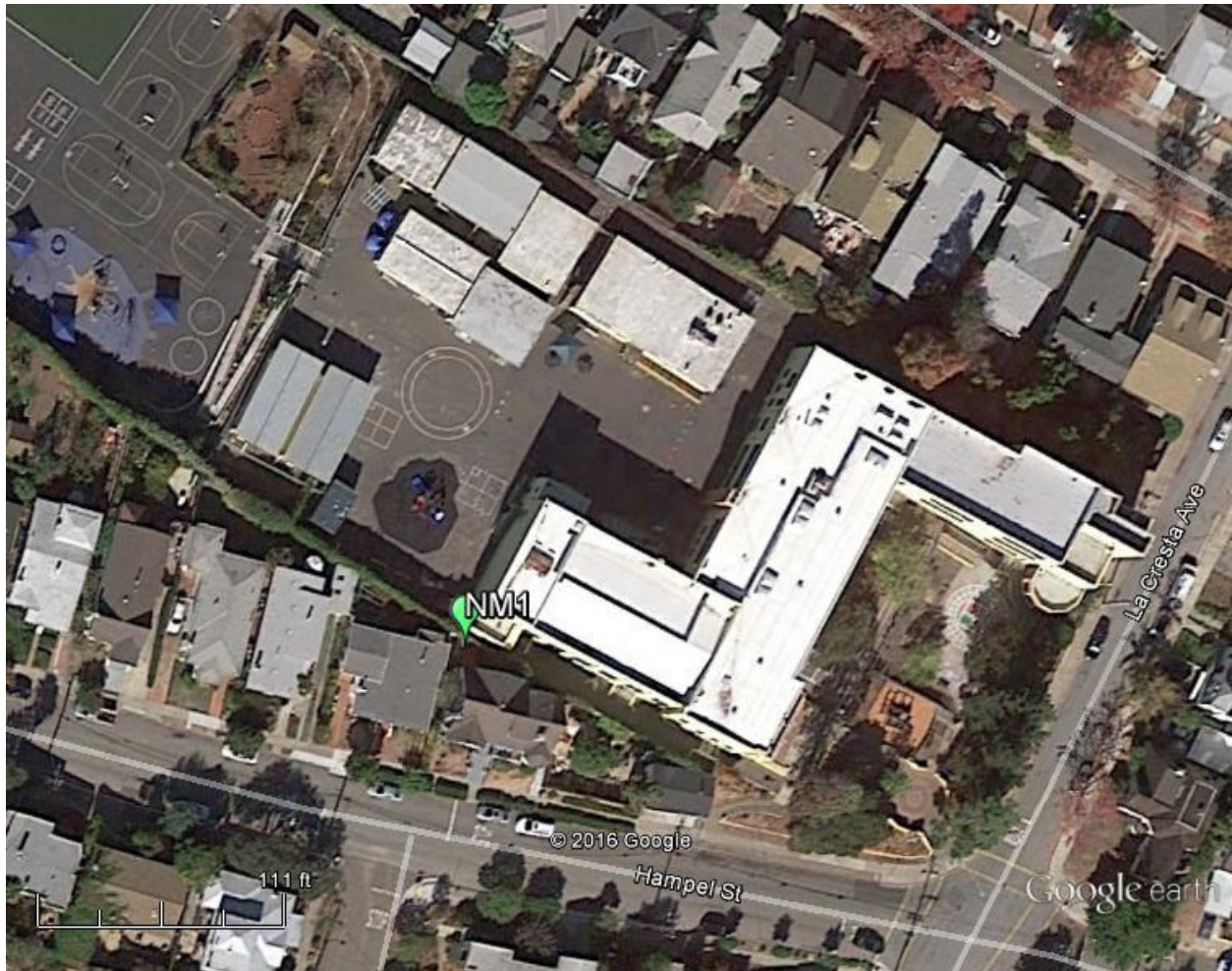
**Construction Activities:** The vegetation trimming and the installation of the Hampel side sound blankets began around noon on Thursday and continued through Saturday. Sound blankets and supporting posts (where needed) were installed at the perimeter of the project on the Hampel and Wellington sides.

**Comments:**

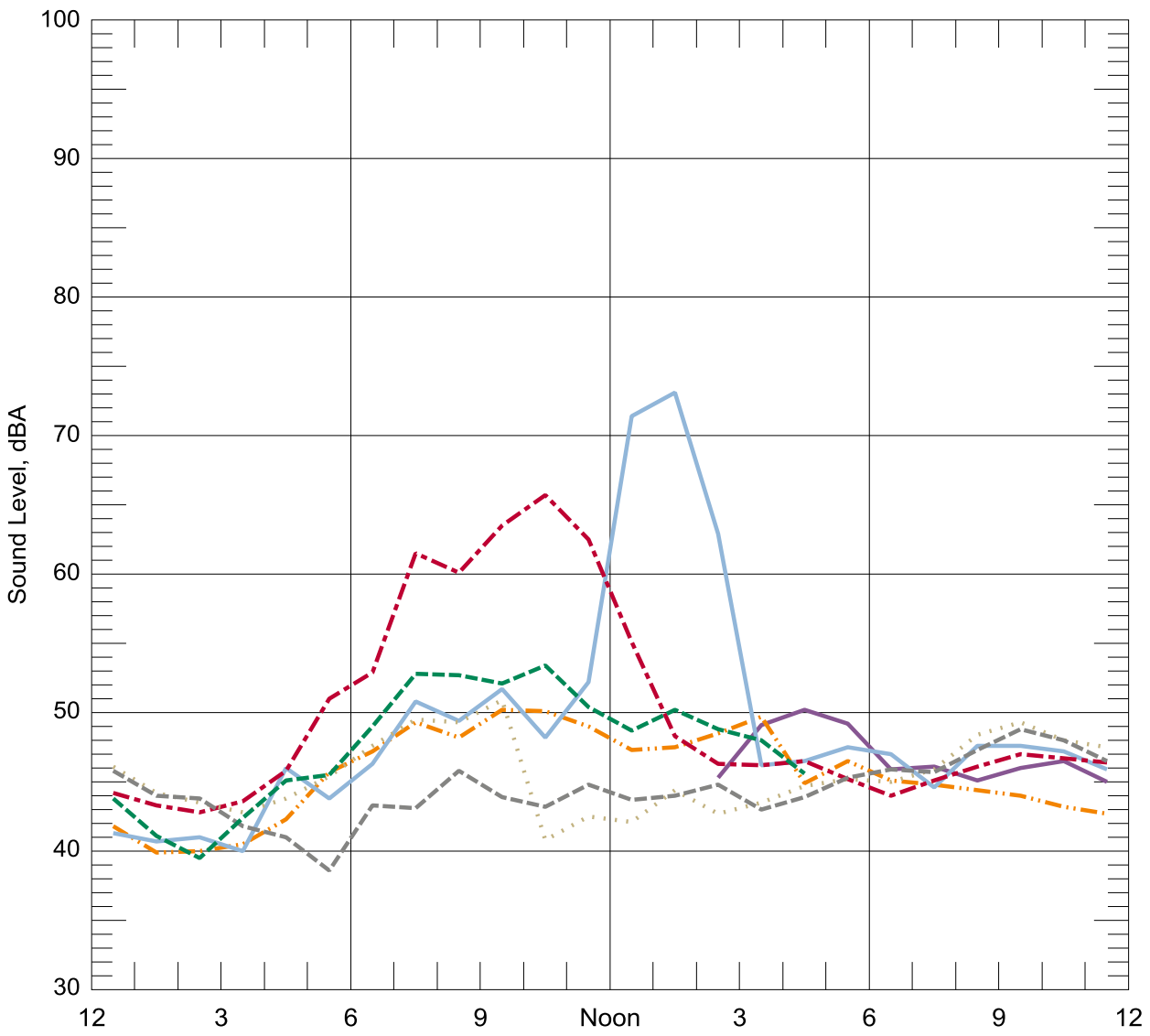
Hourly 65 dBA Leq noise limit. Construction activities were at or below allowable levels for the majority of the work week. Levels were exceeded for two hours on Thursday, September 22 and one hour on Friday, September 23 during vegetation trimming and sound blanket installation. Current noise mitigation measures include a 10 ft high sound blanket barrier surrounding the upper yard, noise reducing ear muffs distributed to neighbors, and a daily construction schedule which shifts major demolition activities to start no earlier than 8 AM (whereas construction activities are normally allowed to start at 7 AM). These measures are the best available, reasonable and feasible practices for reducing noise given the project constraints.

Extreme noise. No extreme noise greater than 90 dBA was generated at the noise monitoring site.

The project complies with the City noise ordinance for the vast majority of the work day and is providing the best available mitigation measures for those times when the noise exceeds the limits.

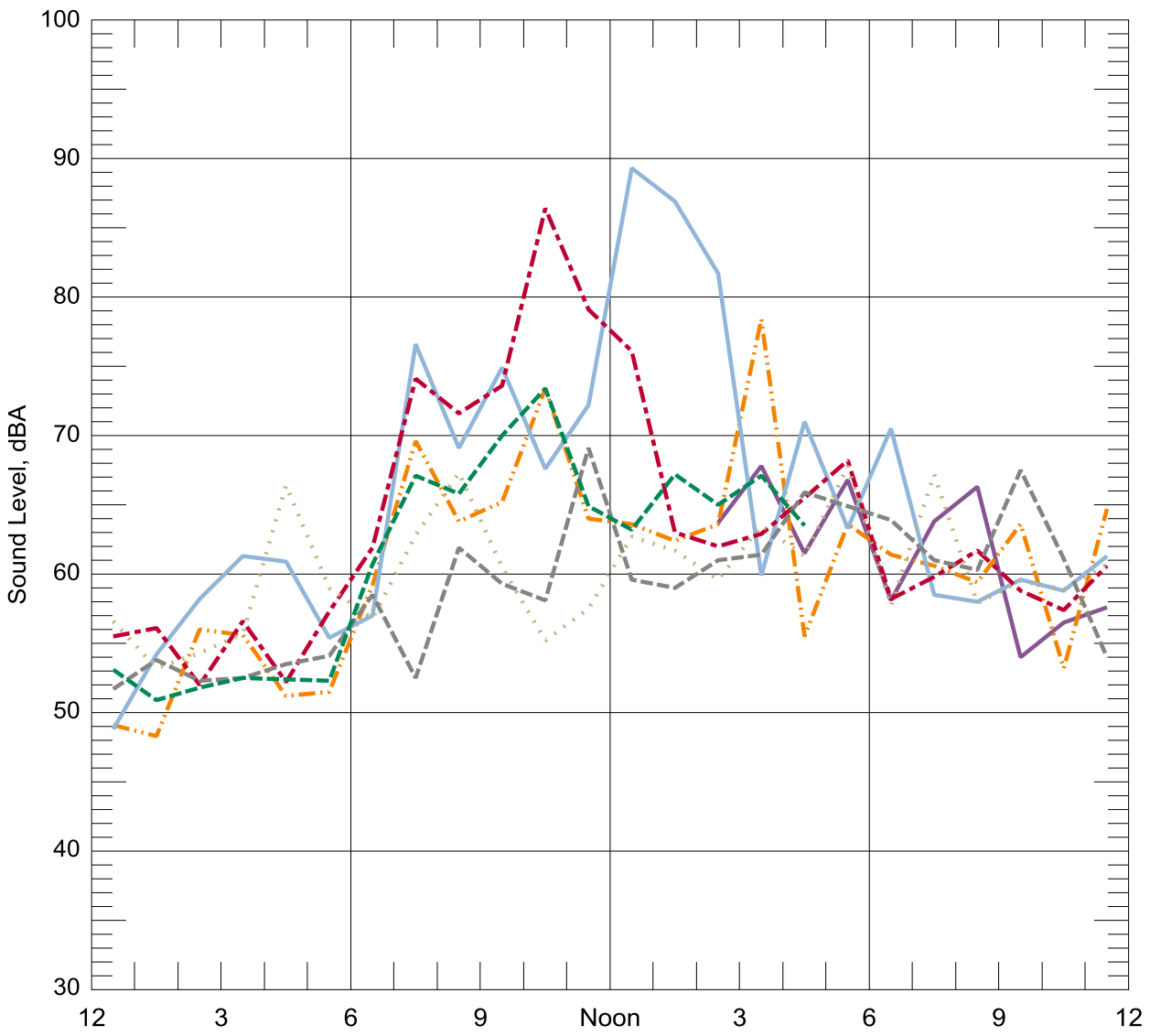


**Figure 1 Area site plan and Noise Monitoring Location**



- L<sub>eq</sub> Tuesday Sep 20 (partial)
  - · - · - L<sub>eq</sub> Wednesday Sep 21
  - L<sub>eq</sub> Thursday Sep 22
  - · - · - L<sub>eq</sub> Friday Sep 23
  - · · · · L<sub>eq</sub> Saturday Sep 24
  - - - - L<sub>eq</sub> Sunday Sep 25
  - · - · - L<sub>eq</sub> Monday Sep 26 (end at 4 pm)
- |                    |
|--------------------|
| 51 L <sub>dn</sub> |
| 62 L <sub>dn</sub> |
| 58 L <sub>dn</sub> |
| 52 L <sub>dn</sub> |
| 51 L <sub>dn</sub> |
| 51 L <sub>dn</sub> |

**Figure 2: Hourly Energy Equivalent Noise Levels - NM1 (Hampel)**



- L<sub>max</sub> Tuesday Sep 20 (partial)
- - - L<sub>max</sub> Wednesday Sep 21
- L<sub>max</sub> Thursday Sep 22
- - - L<sub>max</sub> Friday Sep 23
- · · L<sub>max</sub> Saturday Sep 24
- - - L<sub>max</sub> Sunday Sep 25
- - - L<sub>max</sub> Monday Sep 26 (end at 4 pm)

**Figure 3: Hourly L<sub>max</sub> Noise Levels - NM1 (Hampel)**